

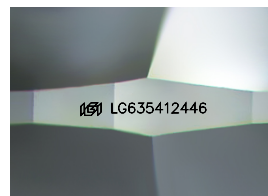
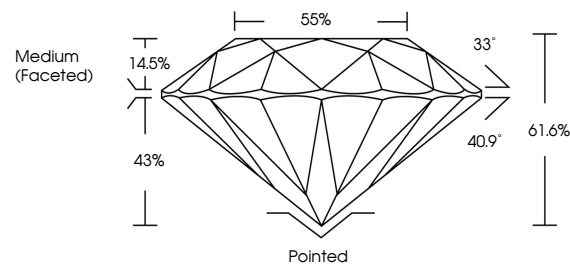


**ELECTRONIC COPY**

## LABORATORY GROWN DIAMOND REPORT

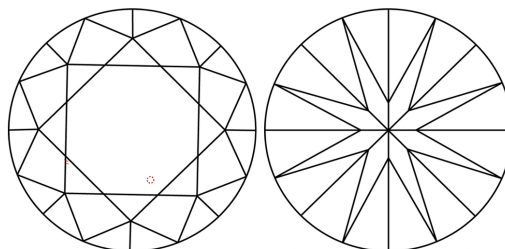
LG635412446  
Report verification at [igi.org](https://igi.org)

## PROPORTIONS



Sample Image Used

## CLARITY CHARACTERISTICS



### KEY TO SYMBOLS

Red symbols indicate internal characteristics.  
Green symbols indicate external characteristics.

## COLOR

D E F G H I J Faint Very Light Light

## CLARITY

IF	VVS <sup>1-2</sup>	VS <sup>1-2</sup>	SI <sup>1-2</sup>	I <sup>1-3</sup>
Internally Flawless	Very Very Slightly Included	Very Slightly Included	Slightly Included	Included



© IGI 2020, International Gemological Institute

FD - 10 20

**www.igi.org**

## DIAMOND REPORT



May 21, 2024

IGI Report Number **LG635412446**

Description	LABORATORY GROWN DIAMOND
-------------	--------------------------

Shape and Cutting Style **ROUND BRILLIANT**

Measurements 10.18 - 10.22 X 6.29 MM

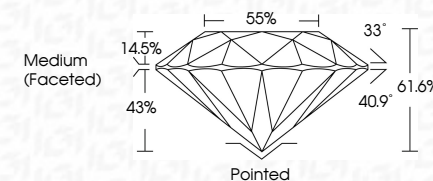
## GRADING RESULTS

Carat Weight 4.00 CARATS

Color Grade

Clarity Grade WS 2

Cut Grade **IDEAL**



### ADDITIONAL GRADING INFORMATION

Polish **EXCELLENT**Symmetry **EXCELLENT**Fluorescence **NONE**Inscription(s)  LG635412446

Comments: As Grown - No indication of post-growth treatment.

This Laboratory Grown Diamond was created by High Pressure High Temperature (HPHT) growth process.

Type II



May 21, 2024	4.00 CARATS	Pointed	Comments: No Growth - No indication of post-growth in this Laboratory Grown Diamond was created by High Pressure High temperature (HPHT) growth process. Type II
GI Report No LG435472446	F	EXCELLENT	
ROUND BRILLIANT	VVS 2	EXCELLENT	
10.18 x 10.22 x 6.29 MM	IDEAL	NONE	
	61.6%	169 LG435472446	
	55%	Medium (Faceted)	
		Culet	
		Polish	
		Symmetry	
		Fluorescence	
		Inscriptions(s)	