

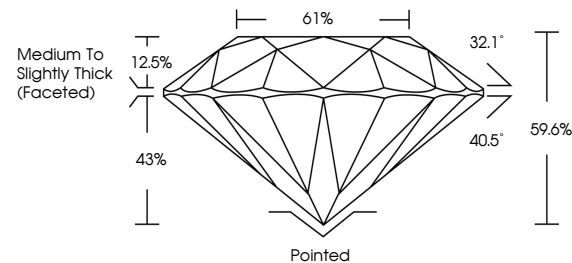


ELECTRONIC COPY

LABORATORY GROWN DIAMOND REPORT

LG668415283
Report verification at igi.org

PROPORTIONS



Sample Image Used

COLOR

D E F G H I J Faint Very Light Light

CLARITY

IF	VVS ¹⁻²	VS ¹⁻²	SI ¹⁻²	I ¹⁻³
Internally Flawless	Very Very Slightly Included	Very Slightly Included	Slightly Included	Included



© IGI 2020, International Gemological Institute

FD - 10 20

www.igi.org

LABORATORY GROWN DIAMOND REPORT



December 4, 2024

IGI Report Number **LG668415283**Description **LABORATORY GROWN DIAMOND**Shape and Cutting Style **ROUND BRILLIANT**

Measurements **8.12 - 8.17 X 4.85 MM**

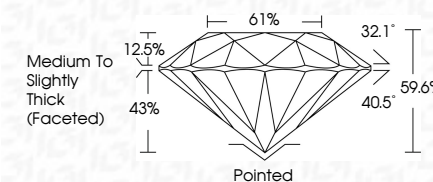
GRADING RESULTS

Carat Weight **2.00 CARATS**

Color Grade	F
-------------	---

Clarity Grade VS 2

Cut Grade **EXCELLENT**



ADDITIONAL GRADING INFORMATION

Polish **EXCELLENT**Symmetry **EXCELLENT**Fluorescence **NONE**Inscription(s) LG668415283

Comments: This Laboratory Grown Diamond was created by Chemical Vapor Deposition (CVD) growth process.
Type IIa



December 4, 2024	Color Weight	2.00 CARATS
GJ Report No. LG5694112883	Color Grade	F
ROUND BRILLIANT	Clarity Grade	VS 2
	Clarity Grade	EXCELLENT
	Depth	59.6%
	Table	61%
	Girdle	Medium to Slightly Thick (scored)
	Culet	Pointed
	Polish	EXCELLENT
	Symmetry	EXCELLENT
	Fluorescence	NONE
	Inscriptions(s)	1691 LG5694112883
	Comments:	Laboratory Grown Diamond was created by Chemical Vapor Deposition (CVD) growth process.
	Type IIA	